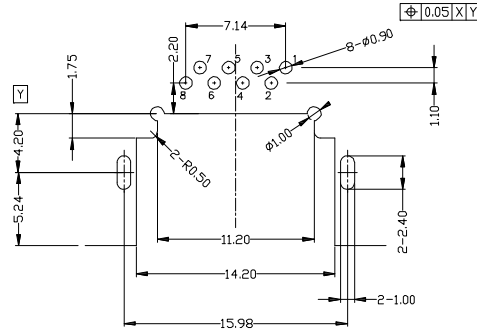
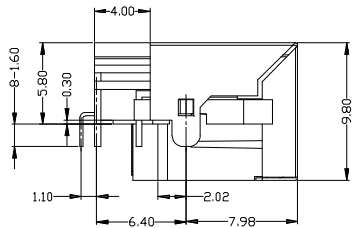
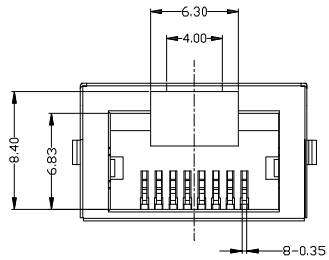
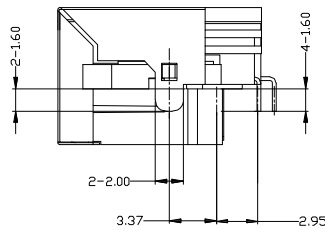
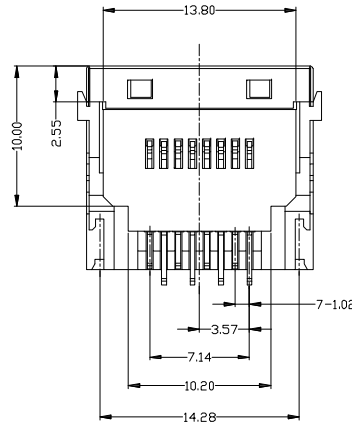
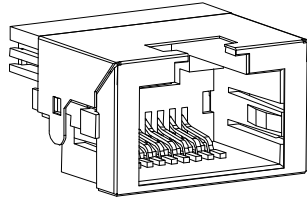
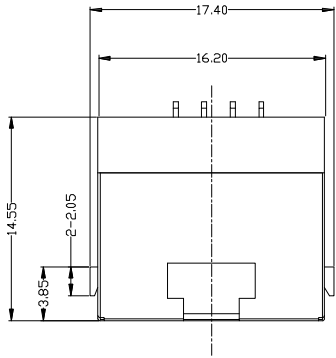


ROHS ENVIRONMENTAL PROTECTION

REV.	DESCRIPTION	ECN NO.	APPD.
R1	NEW RELEASE		



PCBLAYOUT T=1.2  
TOL:±0.05

SPECIFICATION:  
JACK CAVITY CONFORMS TO FCC RULES AND REGULATIONS: PART 68 SUBPART F.

- ELECTRICAL:
1. Voltage: 125V AC RMS
  2. Current Rating: 1.5Amp.
  3. Contact Resistance: 40 Milliohms Max.
  4. Insulation Resistance: 500 Megohms Min. @500 Vdc.
  5. Dielectric Withstand Voltage: 500V DC Rms 50Hz, 1Min.

- MECHANICAL:
1. Durability: 750 cycles Min.

- ENVIRONMENTAL:
1. Storage: -40°C to +85°C.
  2. Operation: : -20°C to +75°C.
  3. IR Reflow Soldering Temperature:: 255°C to 260°C(5-10 Seconds).
  4. Lead-free process,compliant RoHS.

RJ 1 1 D 1 2 3 1 1 - X X

Port Matrix Configuration
11: 1X1 Port
12: 1X2 Ports
14: 1X4 Ports
21: 2X1 Ports

Termination Method to PCB
S: SMT
D: DIP

Shielding & EMI Finger
1: With EMI Finger
2: Without EMI Finger
3: Without Shielding
4: Stacked(Multi-Ports)

PCB Mount Orientation
1: Latch Up(Side Entry)
2: Latch Down(Side Entry)
3: Vertical(Top Entry)
4: Stacked(Multi-Ports)

Packing
T: Tray
R: Tape & Reel

Gold Plating
0: Fu"
1: 1u"
2: 3u"
3: 6u"
4: 15u"
5: 30u"
6: 50u"

NO.	PART NAME	QTY	MATERIAL	PLATING & COLOR
c	SHIELDING	1	SUS T=0.20mm	Ni PLATING
b	TERMINAL	8	PHOSPHOR BRONZE	Au/Tin PLATING
a	HOUSING	1	LCP UL94V-0	BLACK

QUALITY SYMBOLS	MAJOR	UNIT: mm	Size:
■: CRITICAL	☒: S.P.C	SCALE: NTS	A3
▽: ZERO DEFECT			

TOLERANCE UNLESS OTHERWISE SPECIFIED:	DECIMALS:	ANGLES:
X: ±0.5	X: ±0.3	X.X: ±1°
X.XX: ±0.2		

Yee YEESHINE TECHNOLOGY DONGGUAN CHINA

APPROVED	CHECKED	DRAWN	PART NO.	RJ11D12311-XX
23MAR2016	23MAR2016	22MAR2016	DESCRIPTION	RJ45 Mid Mount, THT, 8P8C, PH5.80mm Without LED
K.L.	Jack Liu	Jack Liu	CUSTOMER COPY	SHEET 1 OF 1 DRAWING NO. YEE160100 REV R1